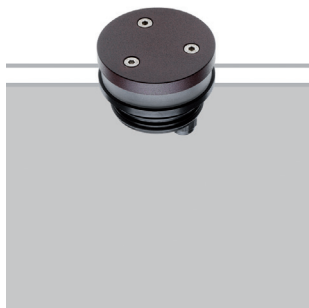


KING

Pathlights

design Roberto Mantovani



The King range offers IP67-rated, recessed ground fixtures for grazing lighting with 360° light emission. Utmost attention to detail and the highest optical and mechanical qualities make this a high-end product.

La gamma King offre incassi a terra IP67 per luce in radenza con emissione luminosa a 360°. Cura del dettaglio e qualità ottica e meccanica ne fanno un prodotto di alta gamma.

La gamme King propose des encastrables au sol IP67 pour lumière à ras avec émission lumineuse à 360°. Soins du détail et qualité optique et mécanique en font un produit de haute gamme.

Die Produktreihe King bietet Einbauten am Boden mit Schutzklasse IP67 für Streiflicht mit Lichtstrahlen von 360°. Liebe zum Detail und optische und mechanische Qualität machen es zu einem hochwertigen Produkt.

IP67 made in Italy



Supply current

350-500mA (V, 8,7V)

Power

3-6W

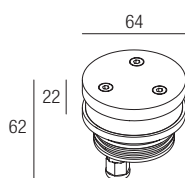
Series wiring

CRI

85

2-Step MacAdam

Dimensions



CCT/CRI/Flux

	350mA	500mA
2700K	267lm	384lm
3000K	279lm	400lm
4200K	309lm	462lm
6000K	342lm	495lm

Code construction

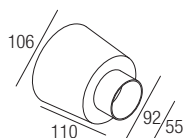
KGO X X

0	1	2	3	6	7	8
2700K	3000K	4200K	6000K	Blue	Green	Red
G	N	K	Z			
Grey	Black	COR-TEN	INOX AISI 316L			

Note: cable cut to measure on request

Accessories

CSDS10
Recessing box



Drivers

350 mA		500 mA	
on/off	dimmable	on/off	dimmable
AL1034 (1..3) 30mm IP20	AL4000 (1..4) 72mm IP20 PUSH 0/1..10V	AL1074 (1..2) 30mm IP20	AL4010 (1..4) 72mm IP20 PUSH 0/1..10V
AL1035 (1..3) 40mm IP20	AL4051 (1..4) 72mm IP20 DALI 2	AL1077 (1..2) 40mm IP20	AL4151 (1..4) 72mm IP20 DALI 2
AL1037 (1..5) 56mm IP20 S.P.	AL4053 (1..4) 56mm IP20 PUSH IGBT-TRIAC	AL1084 (1..3) 56mm IP20 S.P.	AL4153 (1..4) 56mm IP20 PUSH IGBT-TRIAC
AL9011 (1..4) 44mm IP67	AL8035 (2..4) IP67 DALI	AL9051 (1..3) 44mm IP67	AL8050 (2..4) IP67 DALI