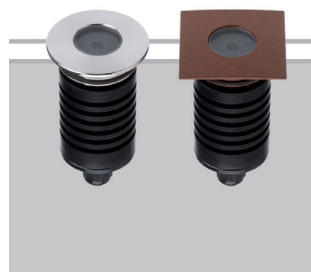


## JAN 2

Uplights

design Roberto Mantovani



IP67 recessed fixtures of the highest quality construction with extremely compact dimensions with extremely clean 5° light beams for clear and defined light effects. Body in anodized aluminium, versions with the front mask in stainless steel or anodised aluminium and powder-coated. Toughened extra-clear glass, ATEX cable gland, neoprene cord.

Incassi IP67 di altissima qualità costruttiva con dimensioni estremamente contenute con fasci luminosi di 5° di estrema pulizia, per effetti luminosi netti e definiti. Corpo in alluminio anodizzato a spessore, versioni con frontale in acciaio INOX o in alluminio anodizzato e verniciato a polveri. Vetro extrachiario temprato, pressacavo ATEX, cavo in neoprene.

Encastrables IP67 de très haute qualité constructive avec des dimensions extrêmement contenues avec faisceaux lumineux de 5° d'une propreté extrême, pour des effets lumineux nets et définis. Corps en aluminium anodisé à épaisseur, versions avec frontal en acier INOX ou en aluminium anodisé et peint en poudre. Verre extra-clair trempé, presse-étoupe ATEX, câble en néoprène.

IP67-Einbauleuchten höchster Bauqualität mit äußerst kompakten Abmessungen und extrem sauberen 5°-Lichtverteilungen für klare und definierte Lichteffekte. Gehäuse aus dick eloxiertem Aluminium, Ausführungen mit Edelstahlfront oder aus eloxiertem, pulverbeschichtetem Aluminium. Speziell klares Hartglas, ATEX-Kabelverschraubung, Neoprenkabel.

IP67 made in Italy



### Supply current

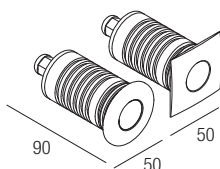
350-500mA (V, 2.9V)

### Power

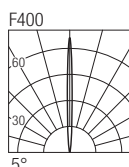
1-2W

### Series wiring

### Dimensions



### Photometric diagrams

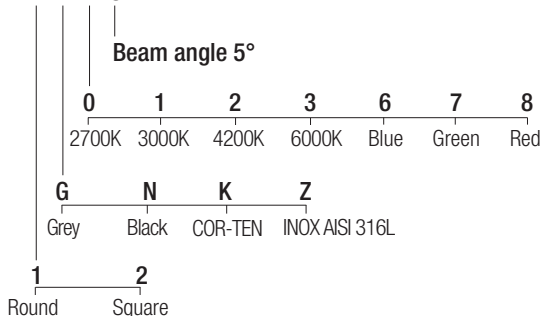


### CCT/CRI/Flux

	350mA	500mA
2700K	89lm	128lm
3000K	93lm	133lm
4200K	103lm	154lm
6000K	114lm	165lm

### Code construction

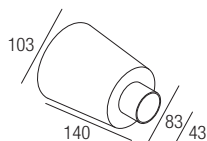
JN1 X X X 5



Note: cable cut to measure on request

### Optionals

CSBU01  
Recessing box



### Drivers

